

An underwater photograph showing sunlight rays filtering down through the water, illuminating several jellyfish. The water is a deep teal color, and the light creates a shimmering effect on the jellyfish and the surrounding water.

BUCKEYE
CRUISE FOR CANCER

 SILVERSEASM

Silver Ray

FEBRUARY 17 - 24, 2026

ABOUT US

SHINE BRIGHT AS YOU EMBARK
ON THE ULTIMATE BUCKEYE
ADVENTURE ALONGSIDE OVER
25 BUCKEYE GREATS.

TOGETHER, WE'RE PUSHING
BOUNDARIES IN FUNDRAISING
AND ILLUMINATING THE PATH
TO END CANCER.

JOIN US ON THE SILVER RAY,
WHERE OPULENT SUITES, AN
EXCEPTIONAL ITINERARY, AND
STATE-OF-THE-ART DESIGN
AWAIT, SETTING A NEW
BENCHMARK FOR LUXURY.

SAILING ITINERARY

Date

Port of Call

2/17

FORT LAUDERDALE
EMBARKATION DAY

2/18

DAY AT SEA

2/19

TURKS AND CAICOS ISLANDS

2/20

DAY AT SEA

2/21

PHILIPSBURG, ST. MAARTEN
NETHERLANDS ANTILLES

2/22

GUSTAVIA, ST BARTHELEMY
FRENCH WEST INDIES

2/23

ST. THOMAS/ST. JOHN,
U.S. VIRGIN ISLANDS*

2/24

SAN JUAN, PUERTO RICO
DISEMBARKATION DAY

**Port of Call Subject to Change*

Silver Ray Staterooms



OTIUM SUITE

Available as a one bedroom configuration



OWNER'S SUITE

Available as a one-bedroom configuration or as a two-bedroom by adjoining with a Premium Veranda Suite



GRAND SUITE

Available as a one-bedroom configuration or as a two-bedroom by adjoining with a Classic Veranda Suite



MASTER SUITE

Available as a one-bedroom configuration or as a two-bedroom by adjoining with a Premium Veranda Suite or Classic Veranda Suite



SIGNATURE SUITE

Available as a one bedroom configuration

1324 SQ.FT. / 123 M² INCLUDING VERANDA (431 SQ.FT. / 40 M²)

- Large veranda with patio furniture and floor-to-ceiling glass doors and private hot tub
- Living room with convertible sofa to accommodate an additional guest
- Separate dining area
- Bathroom with double faucets on large vanity, separate shower and whirlpool bath
- Twin beds or king-sized bed
- Custom-made luxury bed mattress
- Walk-in wardrobe(s) with personal safe
- Vanity table(s)
- Writing desk(s)
- Two large flat-screen TVs
- Sound system with Bluetooth connectivity
- Espresso machine

ONE BEDROOM: 1055 SQ.FT. / 98 M² INCLUDING VERANDA (172 SQ.FT. / 16 M²)

TWO BEDROOM: 1412 SQ.FT. / 131 M² INCLUDING VERANDA (228 SQ.FT. / 21 M²)

- Large veranda with patio furniture and floor-to-ceiling glass doors; bedroom two has additional veranda
- Living room with convertible sofa to accommodate an additional guest; bedroom two has additional sitting area
- Separate dining area
- Bathroom with double faucets on large vanity, separate shower and whirlpool bath; bedroom two has additional bathroom with shower
- Twin beds or king-sized bed; bedroom two has additional twin beds or queen sized bed
- Custom-made luxury bed mattress
- Walk-in wardrobe(s) with personal safe
- Vanity table(s)
- Writing desk(s)
- Two large flat-screen TVs, plus one additional flat-screen TV in bedroom two
- Sound system with Bluetooth connectivity
- Espresso machine

ONE BEDROOM: 915 SQ.FT. / 85 M² INCLUDING VERANDA (140 SQ.FT. / 13 M²)

TWO BEDROOM: 1272 SQ.FT. / 118 M² INCLUDING VERANDA (196 SQ.FT. / 18 M²)

- Large veranda with patio furniture and floor-to-ceiling glass doors; bedroom two has additional veranda
- Living room with convertible sofa to accommodate an additional guest; bedroom two has additional sitting area
- Separate dining area
- Bathroom with double faucets on large vanity, separate shower and whirlpool bath; bedroom two has additional bathroom with shower
- Twin beds or king-sized bed; bedroom two has additional twin beds or queen sized bed
- Custom-made luxury bed mattress
- Walk-in wardrobe(s) with personal safe
- Vanity table(s)
- Writing desk(s)
- Two large flat-screen TVs, plus one additional flat-screen TV in bedroom two
- Sound system with Bluetooth connectivity
- Espresso machine

ONE BEDROOM: ONE BEDROOM: 721-826 SQ.FT. / 67-77 M² INCLUDING VERANDA (233-330 SQ.FT. / 22-31 M²)

TWO BEDROOM: 1078-1183 SQ.FT. / 100-110 M² INCLUDING VERANDA (286-383 SQ.FT. / 27-36 M²)

- Large veranda with patio furniture and floor-to-ceiling glass doors ; bedroom two has additional veranda
- Living room with convertible sofa to accommodate an additional guest; bedroom two has additional sitting area
- Separate dining area
- Bathroom with double faucets on large vanity, separate shower and whirlpool bath; bedroom two has additional bathroom with shower
- Twin beds or king-sized bed; bedroom two has additional twin beds or queen sized bed
- Custom-made luxury bed mattress
- Walk-in wardrobe(s) with personal safe
- Vanity table(s)
- Writing desk(s)
- Two large flat-screen TVs, plus one additional flat-screen TV in bedroom two
- Sound system with Bluetooth connectivity
- Espresso machine

700 SQ.FT. / 65 M² INCLUDING VERANDA (172 SQ.FT. / 16 M²)

- Large veranda with patio furniture and floor-to-ceiling glass doors
- Living room with convertible sofa to accommodate an additional guest (Suites 6105, 7095, 8087, 9089)
- Separate dining area
- Bathroom with double faucets on large vanity, separate shower and whirlpool bath
- Twin beds or king-sized bed
- Custom-made luxury bed mattress
- Walk-in wardrobe(s) with personal safe
- Vanity table(s)
- Writing desk(s)
- Two large flat-screen TVs
- Sound system with Bluetooth connectivity
- Espresso machine





SILVER SUITE

Available as a one-bedroom configuration or as a two-bedroom by adjoining with a Superior Veranda Suite

Two suites are available as a wheelchair accessible suite.



JUNIOR GRAND SUITE

Available as a one-bedroom configuration or as a two-bedroom by adjoining with a Classic Veranda Suite



PREMIUM MEDALLION SUITE / MEDALLION SUITE

Available as a one bedroom configuration



PREMIUM VERANDA/DELUXE VERANDA/SUPERIOR VERANDA/CLASSIC VERANDA

Available as a one-bedroom configuration

Four Premium Veranda Suites are available as a wheelchair accessible suite.

**ONE BEDROOM: 678 SQ.FT. / 63 MP
INCLUDING VERANDA (118 SQ.FT. / 11 MP)**

**TWO BEDROOM: 1033 SQ.FT. / 96 MP
INCLUDING VERANDA (172 SQ.FT. / 16 MP)**

- Veranda with patio furniture and floor-to-ceiling glass doors; bedroom two has additional veranda
- Living room with convertible sofa to accommodate an additional guest; bedroom two has additional sitting area
- Separate dining area
- Bathroom with double faucets on large vanity, separate shower and whirlpool bath; bedroom two has additional bathroom with shower
- Wheelchair accessible suite has a bathroom with vanity and separate shower
- Twin beds or king-sized bed; bedroom two has additional twin beds or queen sized bed
- Custom-made luxury bed mattress
- Walk-in wardrobe with personal safe
- Vanity table
- Writing desk
- Two large flat-screen TVs, plus one additional flat-screen TV in bedroom two
- Sound system with Bluetooth connectivity
- Espresso machine

**ONE BEDROOM: 581-624 SQ.FT. / 54-58 MP
INCLUDING VERANDA (65 SQ.FT. / 6 MP)**

**TWO BEDROOM: 936-980 SQ.FT. / 87-91 MP
INCLUDING VERANDA (118 SQ.FT. / 11 MP)**

- Veranda with patio furniture and floor-to-ceiling glass doors; bedroom two has additional veranda
- Living room with convertible sofa to accommodate an additional guest; bedroom two has additional sitting area
- Separate dining area
- Bathroom with double faucets on large vanity, separate shower and whirlpool bath; bedroom two has additional bathroom with shower
- Twin beds or king-sized bed; bedroom two has additional twin beds or queen sized bed
- Custom-made luxury bed mattress
- Walk-in wardrobe with personal safe
- Vanity table
- Writing desk
- Two large flat-screen TVs, plus one additional flat-screen TV in bedroom two
- Sound system with Bluetooth connectivity
- Espresso machine

527 SQ.FT. / 49 MP INCLUDING VERANDA (86 SQ.FT. / 8 MP)

- Veranda with patio furniture and floor-to-ceiling glass doors
- Living room with convertible sofa to accommodate an additional guest
- Bathroom with double faucets on large vanity, separate shower and full-sized bath
- Twin beds or king-sized bed; bedroom two has additional twin beds or queen sized bed
- Custom-made luxury bed mattress
- Walk-in wardrobe with personal safe
- Vanity table
- Writing desk
- Two large flat-screen TVs
- Sound system with Bluetooth connectivity
- Espresso machine

257 SQ.FT. / 33 MP INCLUDING VERANDA (53 SQ.FT. / 5 MP)

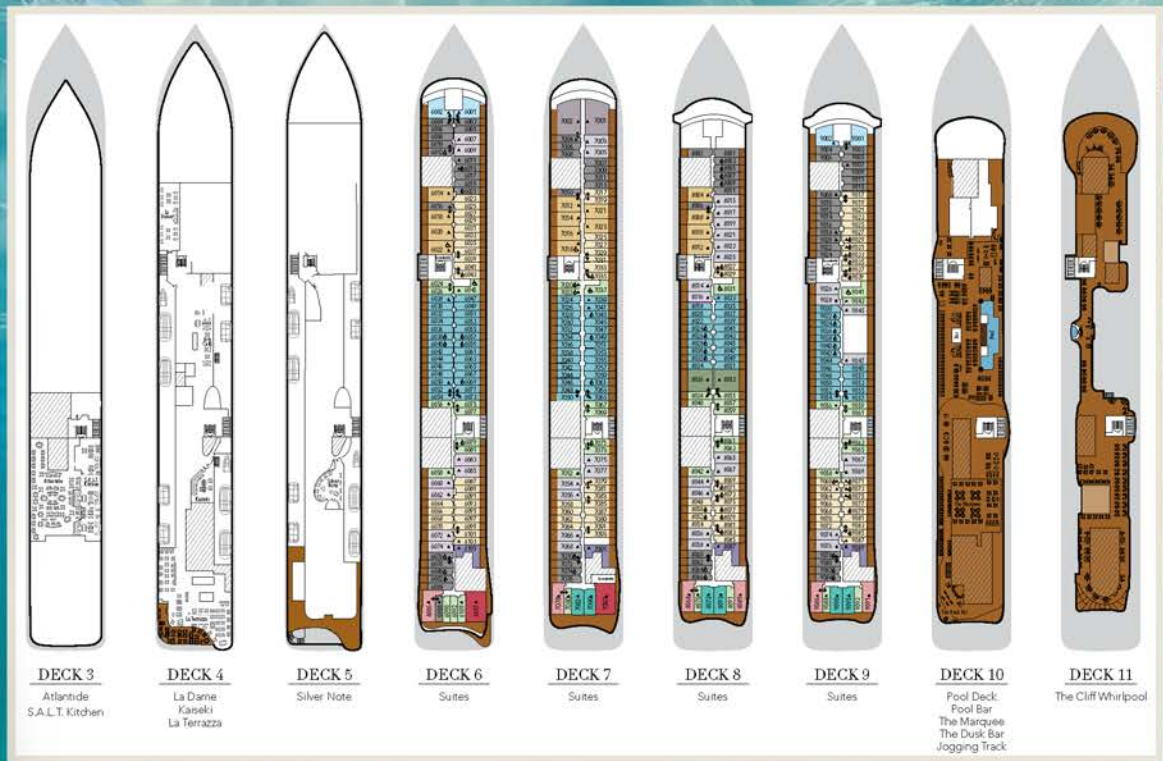
- Veranda with patio furniture and floor-to-ceiling glass doors
- Sitting area
- Twin beds or queen-sized bed
- Bathroom with double faucets on large vanity, separate shower and selected suites with full-sized bath and separate shower, which indicated with 
- Wheelchair accessible suite has a bathroom with vanity and separate shower
- Custom-made luxury bed mattress
- Walk-in wardrobe with personal safe
- Vanity table
- Writing desk
- One large flat-screen TV

Suite diagrams are for illustration purposes only. Features, materials, finishes and layout may differ from shown and subject to change. Sizes are not to scale.



SUITES

DECK PLAN



Specifications

Crew	544
Officers	International
Guests	728
Tonnage	54,700
Length	801 Feet / 244.2 Meters
Width	97 Feet / 29.6 Meters
Speed	19.4 Knots
Passenger Decks	9
Connecting Suites	↕
3rd Guest Capacity	▲
Wheelchair Accessible Suites	♿
All Veranda suites are equipped with a shower, while selected ones are also equipped with a bath, indicated with	
	💧
Technical areas	■
Built	2024

Suite Categories

Otium Suite	●
Owner's Suite	●
Grand Suite	●
Master Suite	●
Signature Suite	●
Silver Suite	●
Junior Grand Suite	●
Premium Medallion Suite	●
Medallion Suite	●
Premium Veranda Suite	●
Deluxe Veranda Suite	●
Superior Veranda Suite	●
Classic Veranda Suite	●

All Suites Include

- ALL ALCOHOLIC & NON-ALCOHOLIC BEVERAGES
- ALL MEALS
- INTERNET
- ONE SHORE EXCURSION PER PERSON PER PORT
- A BUTLER PER STATEROOM
- ALL PORT CHARGES, TAXES, AND PRE-PAID GRATUITIES.

(EXCLUDES PREMIUM EXCURSIONS)

Shore Excursions

ENJOY A VARIETY OF SHORE
EXCURSIONS IN EACH OF THESE
BEAUTIFUL PORTS! EVERY GUEST
WILL RECEIVE ONE SELECT SHORE
EXCURSION PER PERSON PER PORT.

THEY HAVE EVERYTHING FROM
SCUBA DIVING FOR THOSE SUPER
ADVENTUROUS TYPES, TO JUST
RELAXING ON THE BEACH. EXPLORE
VOLCANOS, ZIPLINE, OR SNORKEL ON
ONE OF THE MANY ISLANDS! YOU
CAN ALSO RELAX FOR THE DAY ON
THE WATER ON A CATAMARAN OR
OFF-ROAD ON AN ATV! THERE IS AN
ADVENTURE OR RELAXATION
AWAITING EVERYONE!



ASHORE

Public Areas



- 1 **S.A.L.T. BAR**
Locally-inspired cocktails and drinks



- 2 **S.A.L.T. LAB**
Interactive space where guests can deep-dive into local culinary techniques through workshops, lectures and cooking demonstrations



- 3 **SILVERSEA CASINO**
Enjoy a variety of table games and slot machines



- 4 **PANORAMA LOUNGE**
A perfect place to break away to, a social place to meet, or an evening venue to partake in a cocktail



- 5 **DOLCE VITA**
Dolce Vita is a relaxed, refined bar with a nightly piano player playing all your favorite tunes.

- 6 **OTIUM SPA**
Otium Spa offers the very latest in beauty therapy

- 7 **FITNESS CENTRE**
Elite design with programs that are specifically created for your body type and needs.

- 8 **CONNOISSEUR'S CORNER**
This is where the cigar aficionados can meet and mingle to share their iconic passion.

- 9 **BOUTIQUE**
Silversea's duty-free boutiques offers our guests a carefully curated selection of cutting edge fashions, jewelry, accessories, fine perfumes, cosmetics

- 10 **POOL DECK & JACUZZI AREA**
Take a dip in the pool, relax in one of the whirlpools or simply soak up the view from one of the sunbeds

- 11 **THE SHELTER**
The newest cocktail hotspot, where top mixologists craft signature bespoke drinks.

- 12 **ARTS CAFÉ**
A lively space to eat, drink, and socialize, offering a menu of healthy snacks, pastries, sandwiches, and a selection of smoothies, juices, fine teas, and authentic Italian espresso.

- 13 **DUSK BAR**
Offers a stunning open-air setting with panoramic views that connect you to your destination

Dining Options

- 1 **S.A.L.T. KITCHEN**
Silver Ray destination focused restaurant
- 2 **SPACCANAPOLI**
Italian Pizzeria
- 3 **THE GRILL**
Outdoor Bar and grille, perfect for evening cocktails
- 4 **ATLANTIDE**
Elegant bar & grill incorporates the best the sea has to offer
- 5 **LA TERRAZZA**
Authentic Italian & fresh sustainable ingredients
- 6 **SILVER NOTE**
Small plate tapas style international cuisine
- 7 **LA DAME**
Silversea's signature french restaurant*
- 8 **KAISEKI**
Japanese experience & cuisine*
- 9 **S.A.L.T. CHEF TABLE**
Offers an intimate, interactive dining experience with a curated menu of small plates celebrating regional flavors, complemented by unique wine and cocktail pairings for an unforgettable culinary journey.
- 10 **THE MARQUEE**
The Marquee is our brand new outdoor dining venue, open from early morning until late evening.
- 11 **IN-SUITE DINING**
Room Service menu 24 hours a day.



AROUND THE SHIP

ONBOARD

All-Inclusive Beverages

ENJOY A GLASS - OR EVEN A BOTTLE - OF CHAMPAGNE, WINE, BEER, OR PREMIUM SPIRITS ON THE HOUSE. SILVERSEA ALSO ENSURES YOU'RE WELL-STOCKED WITH WATER, JUICES, AND SOFT DRINKS IN BOTH THE PUBLIC BARS AND YOUR SUITE. THE SILVERSEA PROMISE IS TO KEEP YOUR MINI-BAR FULL OF YOUR FAVORITE DRINKS - WHETHER THESE ARE NON-ALCOHOLIC OR ALCOHOLIC BEVERAGES (INCLUDING WINE, SPIRITS, AND MIXERS)! YOUR BUTLER WILL REPLENISH DAILY, BUT IF YOU WANT A LITTLE EXTRA, SIMPLY ASK AND WE'LL MAKE SURE YOU GET EXACTLY WHAT YOU WANT. NO WISH IS TOO BIG OR TOO SMALL.



Dedicated Butler Service

SILVERSEA OFFERS AROUND-THE-CLOCK BUTLER SERVICE IN ALL SUITES, ENSURING EVERY NEED IS MET WITH CARE. THEIR PROFESSIONAL AND PERSONABLE TEAM GOES ABOVE AND BEYOND, FROM UNPACKING YOUR SUITCASE AND SHINING YOUR SHOES TO HANDLING LAUNDRY AND IN-SUITE DINING. THEY MAINTAIN YOUR SUITE IN PRISTINE CONDITION, CATER TO SPECIAL REQUESTS, AND KEEP YOUR CUSTOMIZED BAR STOCKED—TURNING A GREAT CRUISE INTO AN EXCEPTIONAL ONE. YOU'LL WONDER HOW YOU EVER MANAGED BEFORE!



An underwater photograph showing sunlight rays filtering down through the water, illuminating a sandy ocean floor and several small fish swimming in the distance.

*Explore the Sponsorship
Opportunities onboard
The Silver Ray!*

SPONSORSHIPS

OTIUM SUITE



THE OTIUM SUITE IS ONE OF OUR NEWEST AND MOST LUXURIOUS OFFERINGS, **WITH ONLY TWO AVAILABLE ABOARD THE SHIP!** IDEALLY POSITIONED IN THE PREMIUM AFT CORNER, THIS SUITE COMES COMPLETE WITH A PRIVATE WHIRLPOOL HOT TUB, ENSURING THE ULTIMATE IN RELAXATION.

WHAT TRULY SETS THE OTIUM SUITE APART IS ITS EXTRAORDINARY 270-DEGREE PANORAMIC VIEW—ONE OF THE BEST VANTAGE POINTS ON BOARD, OFFERING UNPARALLELED VISTAS OF YOUR DESTINATION.

INSIDE, YOU'LL FIND A SPACIOUS LIVING ROOM, A LAVISH WALK-IN CLOSET, A SEPARATE, GENEROUSLY SIZED BEDROOM, AND A BEAUTIFULLY APPOINTED BATHROOM FEATURING BOTH A WHIRLPOOL AND A WALK-IN SHOWER FOR THE ULTIMATE INDULGENCE.



1324 SQ.FT INCLUDING
A 431 SQ.FT VERANDA

\$150,000

Presenting Sponsor



All sponsorships include:

- CUSTOM SPONSOR PENNANT
- AUTOGRAPHED HELMET BY ALL ATHLETES ONBOARD
- FAMILY NAME/COMPANY NAME/LOGO TO APPEAR ON BUCKEYE CRUISE WEBSITE
- AD IN THE ONBOARD SPONSOR BOOK (FULL PAGE)
- OPTION TO PURCHASE ADDITIONAL VERANDA STATEROOMS
- RESERVED THEATER SEATING

SPONSOR BANNER

YOU WILL RECEIVE A CUSTOM-MADE FLAG WITH YOUR FAMILY NAME OR COMPANY NAME. THIS WILL BE FEATURED DURING THE 2026 BUCKEYE CRUISE IN THE MOST PROMINENT THEATER LOCATION!

STATEROOMS

INCLUDED IN THIS SPONSORSHIP ARE ONE OTIUM SUITE, ONE PREMIUM MEDALLION SUITE, FOUR VERANDA STATEROOMS

AIR SEATS

TWELVE ROUND-TRIP AIR SEATS

BRAND RECOGNITION

- MAJOR ONBOARD EVENT NAMING RIGHTS
- 60 SECOND ONBOARD PROMOTIONAL COMMERCIAL SHOWN THROUGHOUT THE CRUISE
- ON-STAGE SPONSOR RECOGNITION DURING THE SAILING
- RECOGNITION ON THE BUCKEYE CRUISE SOCIAL MEDIA FEEDS
- YOUR NAME/COMPANY NAME/LOGO TO APPEAR ON THE BUCKEYE CRUISE FOR CANCER MARKETING MATERIALS

ATHLETE EXCLUSIVES

TWELVE GUESTS WILL JOIN OUR CRUISE ATHLETES FOR THE ROYAL SPONSOR DINNER ONBOARD THE SHIP

CHEF'S TABLE

12 GUESTS WILL ENJOY AN INTIMATE, INTERACTIVE DINING EXPERIENCE WITH A CURATED MENU OF SMALL PLATES CELEBRATING REGIONAL FLAVORS, COMPLEMENTED BY UNIQUE WINE AND COCKTAIL PAIRINGS FOR AN UNFORGETTABLE CULINARY JOURNEY ON BOARD THE BUCKEYE CRUISE FOR CANCER

BASKETBALL SUITE

YOU AND 10 GUESTS WILL ATTEND AN OSU BIG TEN BASKETBALL GAME DURING THE 2025-26 SEASON IN A SUITE. INCLUDES FOOD AND DRINK

PRESENTING

OWNER'S SUITE



THE PRESTIGIOUS OWNER'S SUITE IS A BELOVED CHOICE AMONG VENETIAN SOCIETY MEMBERS, **WITH ONLY TWO AVAILABLE ON THE ENTIRE SHIP!**

PERFECTLY SITUATED MID-SHIP ON DECK 8, THIS SUITE OFFERS STUNNING VIEWS FROM BOTH THE DINING AREA AND THE BEDROOM. THE LUXURIOUS BATHROOM IS EQUIPPED WITH A DOUBLE VANITY, A WHIRLPOOL, A WALK-IN SHOWER, A BIDET, AND A SEPARATE GUEST RESTROOM, ENSURING THE ULTIMATE IN-SUITE EXPERIENCE.



1055 SQ.FT INCLUDING A
228 SQ.FT VERANDA

\$100,000

Coastal - Scarlet Sponsorship



All sponsorships include:

- CUSTOM SPONSOR PENNANT
- AUTOGRAPHED HELMET BY ALL ATHLETES ONBOARD
- FAMILY NAME/COMPANY NAME/LOGO TO APPEAR ON BUCKEYE CRUISE WEBSITE
- AD IN THE ONBOARD SPONSOR BOOK (FULL PAGE)
- OPTION TO PURCHASE ADDITIONAL VERANDA STATEROOMS
- RESERVED THEATER SEATING

SPONSOR BANNER

YOU WILL RECEIVE A CUSTOM-MADE FLAG WITH YOUR FAMILY NAME OR COMPANY NAME. THIS WILL BE FEATURED DURING THE 2026 BUCKEYE CRUISE IN THE MOST PROMINENT THEATER LOCATION!

STATEROOMS

INCLUDED IN THIS SPONSORSHIP ARE ONE **OWNER'S SUITE** AND THREE VERANDA STATEROOMS

AIR SEATS

EIGHT ROUND-TRIP AIR SEATS

BRAND RECOGNITION

- MAJOR ONBOARD EVENT NAMING RIGHTS
- 60 SECOND ONBOARD PROMOTIONAL COMMERCIAL SHOWN THROUGHOUT THE CRUISE
- ON-STAGE SPONSOR RECOGNITION DURING THE SAILING
- RECOGNITION ON THE BUCKEYE CRUISE SOCIAL MEDIA FEEDS
- YOUR NAME/COMPANY NAME/LOGO TO APPEAR ON THE BUCKEYE CRUISE FOR CANCER MARKETING MATERIALS

ATHLETE EXCLUSIVES

EIGHT GUESTS WILL JOIN OUR CRUISE ATHLETES FOR THE ROYAL SPONSOR DINNER ONBOARD THE SHIP

BASKETBALL SUITE

YOU AND 10 GUESTS WILL ATTEND AN OSU BIG TEN BASKETBALL GAME DURING THE 2025-26 SEASON IN A SUITE. INCLUDES FOOD AND DRINK

COASTAL
Scarlet

GRAND SUITE



IF YOU'VE EVER DREAMED OF EXPERIENCING THE PINNACLE OF ULTRA-LUXURY CRUISING, THE GRAND SUITE IS THE PERFECT CHOICE. LOCATED AT THE FRONT OF THE SHIP, THIS SUITE OFFERS AN UNPARALLELED BLEND OF SOPHISTICATION AND STYLE FOR DISCERNING TRAVELERS.

WITH ONLY TWO AVAILABLE ON THE SHIP, IT'S TRULY A RARE FIND! POSITIONED ON DECK 7, THE GRAND SUITE IS ONE OF THE LARGEST AND MOST OPULENT SUITES ABOARD SILVER RAY, FEATURING PANORAMIC SEA-TO-SKY VIEWS FROM EVERY LIVING AREA, ALLOWING YOU TO FULLY IMMERSE IN THE BEAUTY OF YOUR DESTINATION.

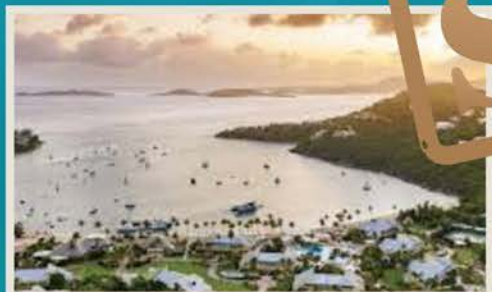
THE SUITE'S LAVISH BATHROOM INCLUDES A DOUBLE VANITY, WHIRLPOOL, WALK-IN SHOWER, AND A SEPARATE GUEST RESTROOM, COMPLETING THE INDULGENT EXPERIENCE.



1 BRM: 915 SQ.FT
INCLUDING A 140 SQ.FT
VERANDA

\$100,000

Coastal - Gray Sponsorship



SPONSOR BANNER

YOU WILL RECEIVE A CUSTOM-MADE FLAG WITH YOUR FAMILY NAME OR COMPANY NAME. THIS WILL BE FEATURED DURING THE 2026 BUCKEYE CRUISE IN THE MOST PROMINENT THEATER LOCATION.

SOLD OUT

THEATER ROOMS

INCLUDED IN THIS SPONSORSHIP ARE ONE **GRAND SUITE** AND THREE VERANDA STATEROOMS

AIR SEATS

EIGHT ROUND-TRIP AIR SEATS

BRAND RECOGNITION

- MAJOR ONBOARD EVENT NAMING RIGHTS
- 60 SECOND ONBOARD PROMOTIONAL COMMERCIAL SHOWN THROUGHOUT THE CRUISE
- ON-STAGE SPONSOR RECOGNITION DURING THE SAILING
- RECOGNITION ON THE BUCKEYE CRUISE SOCIAL MEDIA FEEDS
- YOUR NAME/COMPANY NAME/LOGO TO APPEAR ON THE BUCKEYE CRUISE FOR CANCER MARKETING MATERIALS

ATHLETE EXCLUSIVES

EIGHT GUESTS WILL JOIN OUR CRUISE ATHLETES FOR THE ROYAL SPONSOR DINNER ONBOARD THE SHIP

BASKETBALL SUITE

YOU AND 10 GUESTS WILL ATTEND AN OSU BIG TEN BASKETBALL GAME DURING THE 2025-26 SEASON IN A SUITE. INCLUDES FOOD AND DRINK

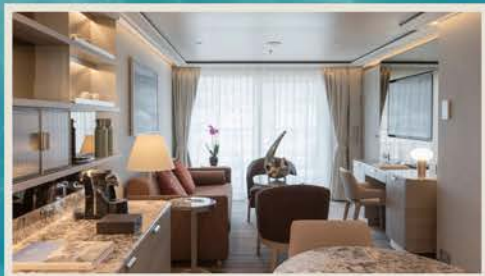
All sponsorships include

- CUSTOM SPONSOR PENNANT
- AUTOGRAPHED HELMET BY ALL ATHLETES ONBOARD
- FAMILY NAME/COMPANY NAME/LOGO TO APPEAR ON BUCKEYE CRUISE WEBSITE
- AD IN THE ONBOARD SPONSOR BOOK (FULL PAGE)
- OPTION TO PURCHASE ADDITIONAL VERANDA STATEROOMS
- RESERVED THEATER SEATING

Gray

COASTAL

SIGNATURE SUITE



THE SIGNATURE SUITE IS ONE OF OUR MOST UNIQUE AND STRIKING NEW OFFERINGS, DESIGNED TO PROVIDE AN UNRIVALED SENSE OF DESTINATION IMMERSION WITH UNOBSTRUCTED VIEWS FROM EVERY INTERIOR SPACE.

ONE OF THE MOST SPACIOUS SUITES ON BOARD, THE SIGNATURE SUITE IS LOCATED MID-SHIP ON DECKS 6, 7, 8, AND 9. ITS INNOVATIVE LAYOUT INCLUDES A GENEROUS DINING AND LIVING AREA, AS WELL AS A PRIVATE, SECLUDED BEDROOM. THE EXPANSIVE BATHROOM IS EQUIPPED WITH A DOUBLE VANITY, WHIRLPOOL, WALK-IN SHOWER, AND A SEPARATE GUEST RESTROOM, ENSURING THE ULTIMATE IN COMFORT AND LUXURY.



1 BRM: 700 SQ.FT
INCLUDING A 172
SQ.FT VERANDA

\$75,000

Top Deck - Scarlet Sponsorship



All sponsorships include:

- CUSTOM SPONSOR PENNANT
- AUTOGRAPHED FOOTBALL BY ALL ATHLETES ONBOARD
- FAMILY NAME/COMPANY NAME/LOGO TO APPEAR ON BUCKEYE CRUISE WEBSITE
- AD IN THE ONBOARD SPONSOR BOOK (FULL PAGE)
- OPTION TO PURCHASE ADDITIONAL VERANDA STATEROOMS
- RESERVED THEATER SEATING

STATEROOMS

INCLUDED IN THIS SPONSORSHIP ARE **ONE SIGNATURE SUITE** AND TWO SUPERIOR VERANDA STATEROOMS

AIR SEATS

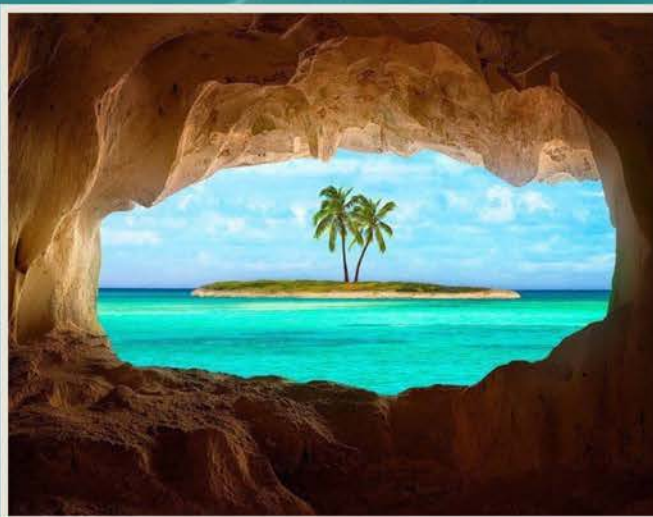
SIX ROUND-TRIP AIR SEATS

BRAND RECOGNITION

- MAJOR ONBOARD EVENT NAMING RIGHTS
- 60 SECOND ONBOARD PROMOTIONAL COMMERCIAL SHOWN THROUGHOUT THE CRUISE
- ON-STAGE SPONSOR RECOGNITION DURING THE SAILING
- RECOGNITION ON THE BUCKEYE CRUISE SOCIAL MEDIA FEEDS

ATHLETE EXCLUSIVES

SIX GUESTS WILL JOIN OUR CRUISE ATHLETES FOR THE ROYAL SPONSOR DINNER ONBOARD THE SHIP



TOP DECK
Scarlet

MASTER SUITE



THIS EXCLUSIVE NEW SUITE CATEGORY IS AVAILABLE ONLY ABOARD SILVER RAY. THE MASTER SUITE EXUDES GRANDEUR AND ELEGANCE, OFFERING A STATELY RETREAT THAT'S PERFECT FOR UNWINDING AFTER A DAY OF EXPLORATION ASHORE.

LOCATED IN THE PRIME AFT CORNER POSITIONS ON DECKS 6, 7, 8, AND 9, THE SUITE FEATURES STUNNING FLOOR-TO-CEILING WINDOWS THAT SURROUND BOTH THE LIVING ROOM AND BEDROOM. THESE EXPANSIVE GLASS PANELS OFFER SPECTACULAR 270° VIEWS, ENSURING YOU HAVE AN UNPARALLELED PERSPECTIVE OF YOUR DESTINATION, NO MATTER WHERE IN THE WORLD YOU ARE.



721-826 SQ.FT INCLUDING
A 233-330 SQ.FT VERANDA

\$75,000

Top Deck - Gray Sponsorship



All sponsorships include:

- CUSTOM SPONSOR PENNANT
- AUTOGRAPHED FOOTBALL BY ALL ATHLETES ONBOARD
- FAMILY NAME/COMPANY NAME/LOGO TO APPEAR ON BUCKEYE CRUISE WEBSITE
- AD IN THE ONBOARD SPONSOR BOOK (FULL PAGE)
- OPTION TO PURCHASE ADDITIONAL VERANDA STATEROOMS
- RESERVED THEATER SEATING

STATEROOMS

INCLUDED IN THIS SPONSORSHIP ARE **ONE MASTER SUITE** AND TWO CLASSIC VERANDA STATEROOMS

AIR SEATS

SIX ROUND-TRIP AIR SEATS

BRAND RECOGNITION

- MAJOR ONBOARD EVENT NAMING RIGHTS
- 60 SECOND ONBOARD PROMOTIONAL COMMERCIAL SHOWN THROUGHOUT THE CRUISE
- ON-STAGE SPONSOR RECOGNITION DURING THE SAILING
- RECOGNITION ON THE BUCKEYE CRUISE SOCIAL MEDIA FEEDS

ATHLETE EXCLUSIVES

SIX GUESTS WILL JOIN OUR CRUISE ATHLETES FOR THE ROYAL SPONSOR DINNER ONBOARD THE SHIP



Gray

TOP DECK

JUNIOR GRAND



SILVER RAY'S JUNIOR GRAND SUITE OFFERS A GENEROUSLY SIZED, COMFORTABLE RETREAT—A TRUE HOME AWAY FROM HOME.

LOCATED FORWARD ON DECKS 6 AND 9, THIS SUITE TAKES INSPIRATION FROM THE GRAND SUITE, OCCUPYING A PRIME BOW POSITION THAT PROVIDES BREATHTAKING, PANORAMIC VIEWS OF YOUR DESTINATION. THE INTERIOR FEATURES A SPACIOUS LIVING AND DINING AREA, COMPLEMENTED BY A PRIVATE, SECLUDED BEDROOM. THE LARGE BATHROOM IS ELEGANTLY APPOINTED WITH A DOUBLE VANITY, WHIRLPOOL BATH, AND A WALK-IN SHOWER, CREATING A SERENE AND LUXURIOUS SPACE.



581-624 SQ.FT INCLUDING
A 65 SQ.FT VERANDA

\$50,000

Captain's Sponsor



STATEROOMS

INCLUDED IN THIS SPONSORSHIP ARE ONE **JUNIOR GRAND SUITE** AND ONE CLASSIC VERANDA STATEROOM OR TWO **MEDALLION SUITES**



AIR SEATS

FOUR ROUND-TRIP AIR SEATS

BRAND RECOGNITION

- MAJOR ONBOARD EVENT NAMING RIGHTS
- 30 SECOND ONBOARD PROMOTIONAL COMMERCIAL SHOWN THROUGHOUT THE CRUISE
- ON-STAGE SPONSOR RECOGNITION DURING THE SAILING
- RECOGNITION ON THE BUCKEYE CRUISE SOCIAL MEDIA FEEDS

ATHLETE EXCLUSIVES

FOUR GUESTS WILL JOIN OUR CRUISE ATHLETES FOR THE ROYAL SPONSOR DINNER ONBOARD THE SHIP

All sponsorships include:

- CUSTOM SPONSOR PENNANT
- AUTOGRAPHED FOOTBALL BY ALL ATHLETES ONBOARD
- FAMILY NAME/COMPANY NAME/LOGO TO APPEAR ON BUCKEYE CRUISE WEBSITE
- AD IN THE ONBOARD SPONSOR BOOK (FULL PAGE)
- OPTION TO PURCHASE ADDITIONAL VERANDA STATEROOMS
- RESERVED THEATER SEATING



CAPTAIN'S

SILVER SUITE



THE SILVER SUITE ABOARD SILVER RAY FEATURES AN INNOVATIVE DESIGN AND IS LOCATED MID-SHIP ON DECKS 6, 7, AND 8, OFFERING SWEEPING, UNOBSTRUCTED SEA VIEWS.

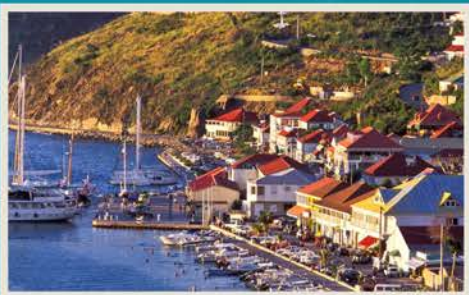
THE SUITE'S SPACIOUS DINING AREA CREATES AN INVITING SETTING FOR INTIMATE EVENINGS, TURNING EVERY MEAL INTO A MEMORABLE EXPERIENCE. IT ALSO BOASTS A GENEROUS WALK-IN CLOSET AND A LUXURIOUS BATHROOM, COMPLETE WITH A WHIRLPOOL BATH, WALK-IN SHOWER, DOUBLE VANITY, AND A SEPARATE LAVATORY, ENSURING THE ULTIMATE IN COMFORT AND CONVENIENCE.



678 SQ.FT INCLUDING
A 118 SQ.FT VERANDA

\$35,000

Silver Sponsorship



All sponsorships include:

- CUSTOM SPONSOR PENNANT
- AUTOGRAPHED FOOTBALL BY ALL ATHLETES ONBOARD
- FAMILY NAME/COMPANY NAME/LOGO TO APPEAR ON BUCKEYE CRUISE WEBSITE
- AD IN THE ONBOARD SPONSOR BOOK (FULL PAGE)
- OPTION TO PURCHASE ADDITIONAL VERANDA STATEROOMS
- RESERVED THEATER SEATING

STATEROOMS

INCLUDED IN THIS SPONSORSHIP ARE ONE **SILVER SUITE** AND ONE SUPERIOR VERANDA

AIR SEATS

FOUR ROUND-TRIP AIR SEATS

BRAND RECOGNITION

- ONBOARD EVENT NAMING RIGHTS
- 30 SECOND ONBOARD PROMOTIONAL COMMERCIAL SHOWN THROUGHOUT THE CRUISE
- ON-STAGE SPONSOR RECOGNITION DURING THE SAILING
- RECOGNITION ON THE BUCKEYE CRUISE SOCIAL MEDIA FEEDS

ATHLETE EXCLUSIVES

FOUR GUESTS WILL JOIN OUR CRUISE ATHLETES FOR A SPONSOR DINNER ONBOARD THE SHIP



SILVER

MEDALLION SUITE



A TRUE MARK OF DISTINCTION, THE MEDALLION SUITE OFFERS A LAVISH AND EXPANSIVE LIVING AREA, BEAUTIFULLY APPOINTED WITH RICH TEXTURES AND COMPLEMENTED BY PANORAMIC VIEWS FROM YOUR GENEROUS PRIVATE VERANDA.

LOCATED MID-AFT ON DECKS 6, 7, 8, AND 9, THE SUITE PROVIDES A COZY INDOOR SITTING AREA, PERFECT FOR RELAXATION. THE SPACIOUS BATHROOM FEATURES A DOUBLE VANITY, A LARGE BATHTUB, AND A SEPARATE SHOWER—AN IDEAL SANCTUARY TO UNWIND AND SOAK IN LUXURY. WITH ITS REFINED DESIGN AND SOPHISTICATED COMFORTS, THE MEDALLION SUITE ENVELOPS YOU IN UNPARALLELED ELEGANCE AND DISTINGUISHED LUXURY.



1 BRM: 527 SQ.FT
INCLUDING A 86 SQ.FT
VERANDA

\$25,000

Medallion Sponsor



All sponsorships include

- CUSTOM SPONSOR PENNANT
- AUTOGRAPHED FOOTBALL BY ALL ATHLETES ONBOARD
- FAMILY NAME/COMPANY NAME/LOGO TO APPEAR ON BUCKEYE CRUISE WEBSITE
- AD IN THE ONBOARD SPONSOR BOOK (HALF PAGE)
- OPTION TO PURCHASE ADDITIONAL VERANDA STATEROOMS
- RESERVED THEATER SEATING

STATEROOMS

INCLUDED IN THIS SPONSORSHIP ARE ONE **MEDALLION SUITE**

AIR SEATS

TWO ROUND-TRIP AIR SEATS

BRAND RECOGNITION

- 30 SECOND ONBOARD PROMOTIONAL COMMERCIAL SHOWN THROUGHOUT THE CRUISE
- ON-STAGE SPONSOR RECOGNITION DURING THE SAILING
- RECOGNITION ON THE BUCKEYE CRUISE SOCIAL MEDIA FEEDS

ATHLETE EXCLUSIVES

TWO GUESTS WILL JOIN OUR CRUISE ATHLETES FOR A SPONSOR DINNER ONBOARD THE SHIP



MEDALLION

VERANDA



WHETHER YOU'RE GEARING UP FOR AN EXCITING DAY ON SHORE, GETTING READY FOR A ROMANTIC DINNER ABOARD, OR RELAXING FOR A PEACEFUL EVENING IN YOUR SUITE, THE DELUXE VERANDA SUITE WILL ENVELOP YOU IN ITS WARM, INVITING ATMOSPHERE.

PERFECTLY LOCATED AFT MID-SHIP ON DECKS 6, 7, 8, AND 9, THE DELUXE VERANDA SUITE OFFERS LUXURIOUS INTERIOR COMFORT. HOWEVER, ITS TRUE HIGHLIGHT LIES JUST OUTSIDE: FLOOR-TO-CEILING GLASS DOORS OPEN TO A PRIVATE TEAK VERANDA, FURNISHED FOR RELAXATION, AND PROVIDING STUNNING PANORAMIC VIEWS OF YOUR DESTINATION.



1 BRM/ 2BRM:
357.FT INCLUDING A
53 SQ.FT VERANDA

\$15,000

First Mate Sponsor



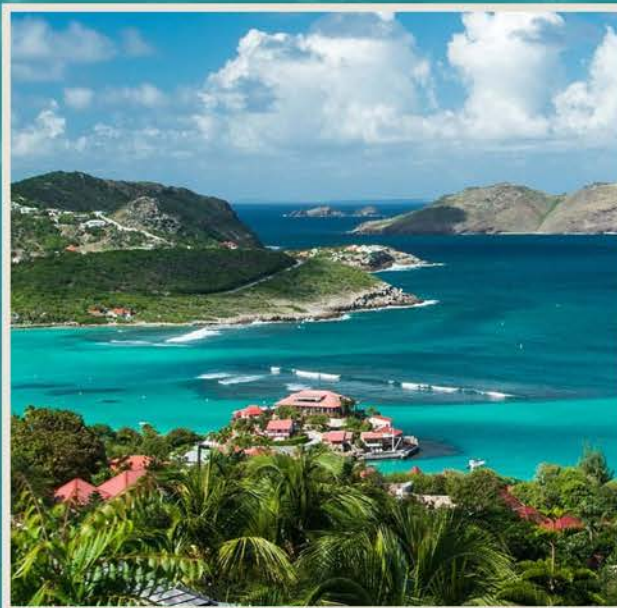
STATEROOMS

INCLUDED IN THIS
SPONSORSHIP IS ONE
PREMIUM VERANDA SUITE



BRAND RECOGNITION

- SPONSOR RECOGNITION ONBOARD
- RECOGNITION ON THE BUCKEYE CRUISE SOCIAL MEDIA FEEDS



All sponsorships include:

- CUSTOM SPONSOR PENNANT
- AUTOGRAPHED FOOTBALL BY ALL ATHLETES ONBOARD
- FAMILY NAME/COMPANY NAME/LOGO TO APPEAR ON BUCKEYE CRUISE WEBSITE
- AD IN THE ONBOARD SPONSOR BOOK (QUARTER PAGE)
- OPTION TO PURCHASE ADDITIONAL VERANDA STATEROOMS
- RESERVED THEATER SEATING

FIRST MATE

Past Cruise Photos



MEMORIES





*Thank you for
your support!*



BUCKEYE
Cruise for Cancer

TO BOOK YOUR SPONSORSHIP PACKAGE
PLEASE CALL 614-792-6204.
FOR MORE INFORMATION VISIT
BUCKEYECRUISE.COM OR EMAIL:
INFO@BUCKEYECRUISE.COM